



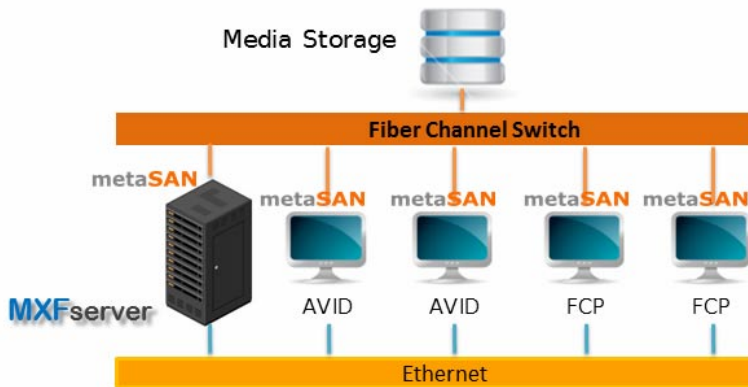
# Sharing Avid Projects in SAN Environment with metaSAN and FilmPartners MXFserver

<i>Introduction</i> .....	2
<i>Requirements</i> .....	2
<i>Setup Procedures</i> .....	3

## Introduction

FilmPartners MXFserver technology allows Avid Media Composer, Apple Final Cut Pro and Adobe Premiere professionals to easily access and share media files (and the respective project data, bins, and settings) that are stored in one common container, mounted on each MXFserver client workstation as a mapped network drive.

With the help of metaSAN you can further enhance this workflow, adding more flexibility, scalability and bandwidth. This document will guide you through the steps of deploying a SAN in which the computer running MXFserver application supervises a SAN volume on which all media is stored and to which each MXFserver client has direct access over the Fibre Channel.



With this setup you achieve the following:

- MXFserver clients have high-speed access to the MXF container over the Fibre Channel;
- setting up one MXFserver is enough to provide all MXFserver clients' access to the MXF container;
- you can add unlimited number of MXFserver clients;
- media is still available to all SAN-connected machines even if the MXFserver suffers a failure;

## Requirements

To proceed with this deployment scenario, make sure that:

- all computers meet the system requirements for installing and running metaSAN 4.6.1 or above (go to <http://www.tiger-technology.com/metaSAN#SystemReqs>) and MXFserver/MXFserver client software;

- the SAN volume that will be used for storing media files is NTFS formatted;
- your SAN is prepared for metaSAN installation (see Prerequisites in metaSAN User’s Guide);

## Setup Procedures

The setup procedures go through the following stages:

1. Install and activate metaSAN on the computer that should play the role of MXFserver, and configure a SAN definition with the volume on which media will be stored. See “Install and Configure metaSAN on the MXFserver Computer” on page 3.
2. On the Metadata Master/MXFserver, disable the delayed close timeout of the metadata cache. See “Disable Delayed Close Timeout of the Metadata Cache on the Metadata Master” on page 7.
3. Install MXFserver and configure it to use the SAN volume for storing media files. See the documentation of your MXFserver software.
4. Install and activate metaSAN on all computers that run MXFserver client application, and join the SAN definition created on the Metadata Master.
5. Configure the SAN volume for work with the MXFserver client computers. See “Configure The SAN Volume for Work with the MXFserver Client Computers” on page 12.
6. Configure MXFserver client application to use the SAN volume for storing media files. See “Set MXFserver Client Software for Collaboration with metaSAN” on page 12.

## Install and Configure metaSAN on the MXFserver Computer

Following the steps below you will install metaSAN on the computer that runs MXFserver application, and will configure a SAN definition to which your computer will be dedicated Metadata Master.

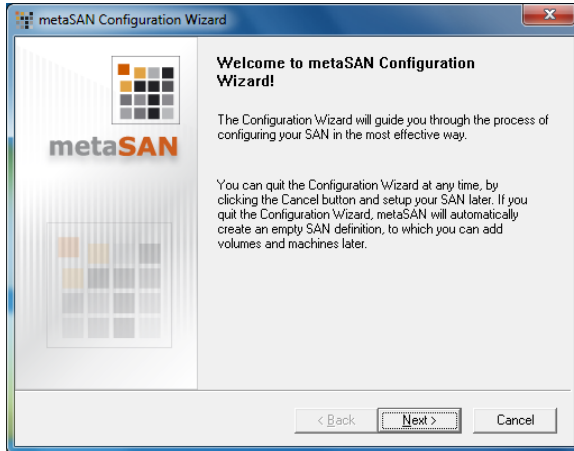
1. On the computer running MXFserver, log on using an account with administrative privileges.
2. Browse for and double-click the metaSAN installation file.
3. Click Run.  
The installation begins.
4. If the Prerequisites Wizard offers you to install additional components, click Next and follow the instructions to install them.

Sharing Avid Projects in SAN Environment with metaSAN and FilmPartners MXFserver

**5.** Before continuing, you must accept the terms of the Software license agreement.

*(optional)* If there are dynamic disks accessible from your computer, metaSAN offers you to backup their configuration. It is strongly recommended to accept and save the LDM Backup file to the desired location.

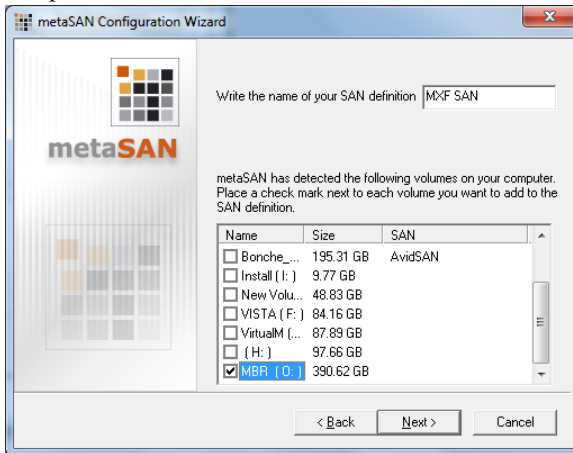
The metaSAN Configuration Wizard appears.



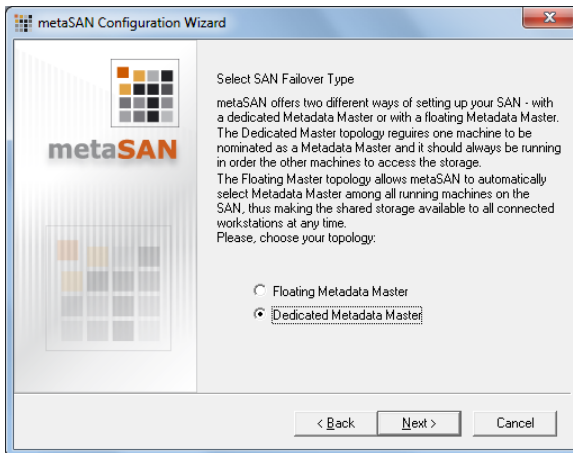
**6.** Click Next and select to create a new SAN definition.



7. Click Next, enter a name of the SAN definition and from the list of volumes detected on the computer, select the volume on which media will be stored.

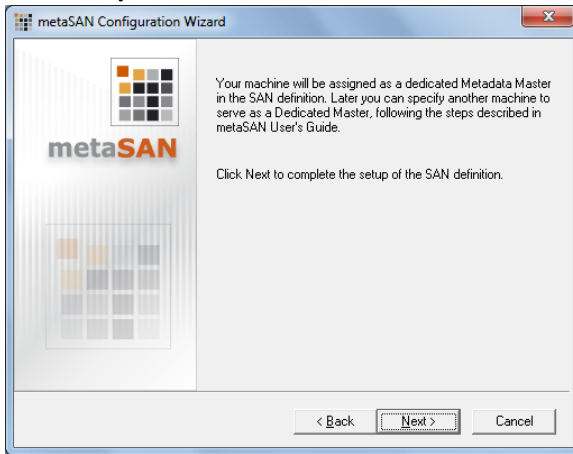


8. Click Next and select Dedicated Metadata Master.



**9.** Click Next.

The Configuration Wizard informs you that your machine is set as dedicated Metadata Master of the newly created SAN definition.

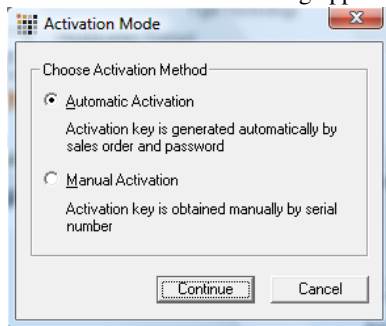


**10.** Click Next and then click Finish.

**11.** When prompted, restart your computer.

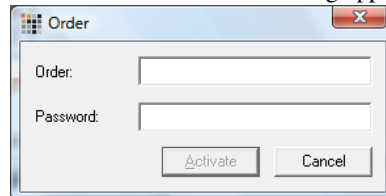
**12.** In the About tab of metaSAN window, click Activate metaSAN.

The Activation Method dialog appears.



**13.** Select "Automatic activation," and click OK.

The Automatic Activation dialog appears.



14. Enter your sales order number and password, and click Activate.

## **Disable Delayed Close Timeout of the Metadata Cache on the Metadata Master**

### **To disable delayed close timeout of the metadata cache:**

1. On the MXFserver computer, click Start and choose Run.
2. In the dialog, type **regedit** to start the Windows Registry editor.
3. Navigate to  
HKEY\_LOCAL\_MACHINE\SYSTEM\CurrentControlSet\Services\SANDS\Parameters
4. Right-click in the right pane and select New DWORD Value from the context menu.
5. Type **CDT** as value name.
6. Right-click **CDT** and select Modify.
7. Change the value to 0 (zero), and click OK.
8. Restart the computer.

## **Install and Configure metaSAN on the MXFserver Client Computers**

Following the steps below you will install and activate metaSAN on each MXFserver client computer and join the SAN definition, created on the Metadata Master/MXFserver computer.

### **To install metaSAN and join the SAN definition on Mac OS X:**

1. Browse for and double-click the metaSAN installation file.  
The installation begins.
2. Click Next.
3. Click Authorize and authenticate yourself in the Authenticate dialog.

Sharing Avid Projects in SAN Environment with metaSAN and FilmPartners MXFserver

4. Before continuing, you must accept the terms of the Software license agreement.

The metaSAN Configuration Wizard appears.



5. Click Next and select to join an existing SAN definition.



- Click Next and select the SAN definition, created on the MXFserver computer.



- Click Next and then click Finish.
- When prompted, restart your computer and follow the steps for activating metaSAN on it.

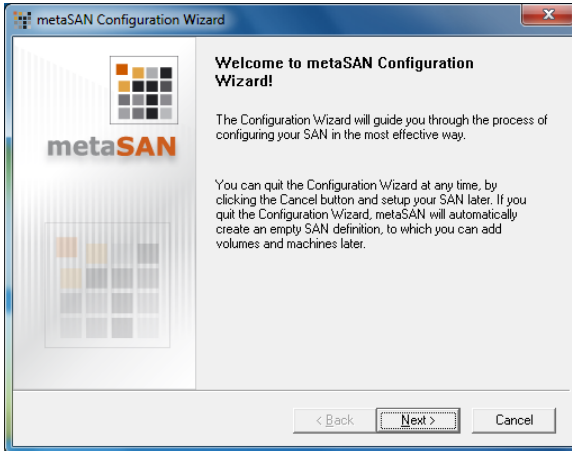
#### **To install metaSAN on Windows:**

- On the selected computer, log on using an account with administrative privileges.
- Browse for and double-click the metaSAN installation file.
- Click Run.  
The installation begins.
- If the Prerequisites Wizard offers you to install additional components, click Next and follow the instructions to install them.

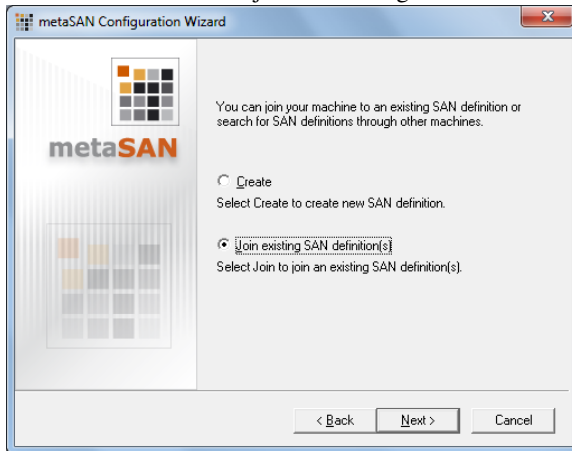
**5.** Before continuing, you must accept the terms of the Software license agreement.

*(optional)* If there are dynamic disks accessible from your computer, metaSAN offers you to backup their configuration. It is strongly recommended to accept and save the LDM Backup file to the desired location.

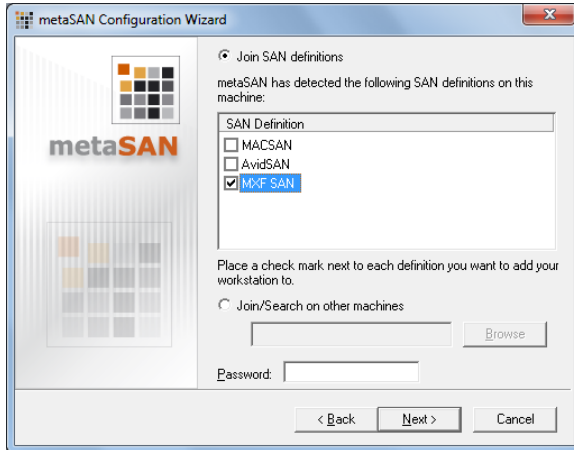
The metaSAN Configuration Wizard appears.



**6.** Click Next and select to join an existing SAN definition.



- Click Next and select the SAN definition, created on the MXFserver computer.

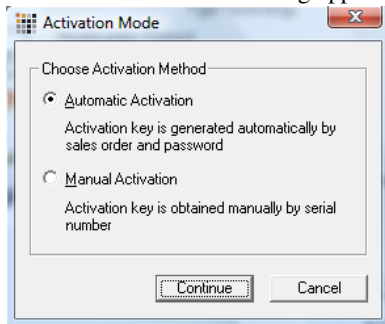


- Click Next and then click Finish.
- When prompted, restart your computer and follow the steps for activating metaSAN on it.

**To activate metaSAN automatically on a Mac OS X and Windows system:**

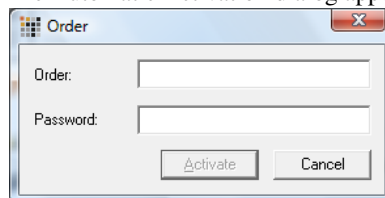
- In the About tab of metaSAN window, click Activate metaSAN.

The Activation Method dialog appears.



- Select "Automatic activation," and click OK.

The Automatic Activation dialog appears.



3. Enter your sales order number and password, and click Activate.

## Configure The SAN Volume for Work with the MXFserver Client Computers

To allow collaboration with metaSAN on each MXFserver client computer you should prevent the access to the SAN volume that stores the MXF container. The SAN volume will be still mounted on your computer and visible in the metaSAN window, but will be hidden in the Finder/Windows Explorer and no user will be able to read and write to it.

### To hide the SAN volume on a Windows SAN Member:

1. Start a Command Prompt and type:

```
msanutil /MXFS <drive letter>
```

where

<drive letter> is the drive letter of the SAN volume on which media should be stored;

for example, to hide the SAN volume “S”, execute the following:

```
msanutil /MXFS S:
```

2. Press Enter.

Access to the SAN volumes is prohibited, although it is visible in the metaSAN UI.

### To hide the SAN volume on a Mac OS X SAN Member:

1. In Terminal type this followed by Return:

```
sudo metasan --mxfs <path to SAN volume>
```

for example, to hide SAN volume MXFMedia, mounted in /Volumes, type:

```
sudo metasan --mxfs /Volumes/MXFMedia
```

2. Provide the necessary password.

Access to the SAN volumes is prohibited, although it is visible in the metaSAN UI.

## Set MXFserver Client Software for Collaboration with metaSAN

Before setting the MXFserver client software for work with the SAN volume, you should first get its GUID, following the steps below.

## Getting the Volume GUID

### To get the volume GUID on Windows:

1. Start a Command Prompt and type:  
`msanutil /MXFSGUID`
2. Press Enter.  
metaSAN utility displays the GUID of the volume that has already been set for collaboration with MXFserver client application.

### To get the volume GUID on Mac OS X:

1. In Terminal type this followed by Return:  
`sudo metasan --mxfsguid <path to SAN volume>`  
for example, to get the GUID of volume MXFMedia, mounted in /Volumes, type:  
`sudo metasan --mxfsguid /Volumes/MXFMedia`
2. Provide the necessary password.  
metaSAN tool displays the GUID of the volume that has already been set for collaboration with MXFserver client application.

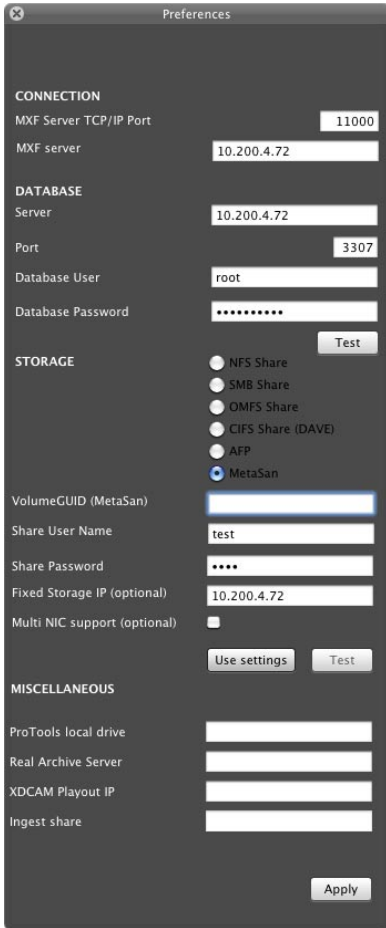
## Configuring MXFserver Client for Collaboration with metaSAN

### To configure MXFserver client for collaboration with metaSAN on Windows:

1. In Windows Explorer, browse to MxfServer.ini file.  
*Tip: This file is stored in the MXFServer subfolder of FilmPartners, accessible in the Program Files directory of your computer.*
2. Open MxfServer.ini file in a text editing application and navigate to the `UseMetaSanVolume` line.
3. Enter the volume GUID as value:  
`UseMetaSanVolume=<volume GUID>`
4. Save and close the file.

**To configure MXFserver client for collaboration with metaSAN on Mac OS X:**

1. Start the MXFserver client application and go to Preferences.
2. In the Storage section of the Preferences dialog, select metaSAN and enter the GUID of the SAN volume in Volume GUID.



3. Click Apply.